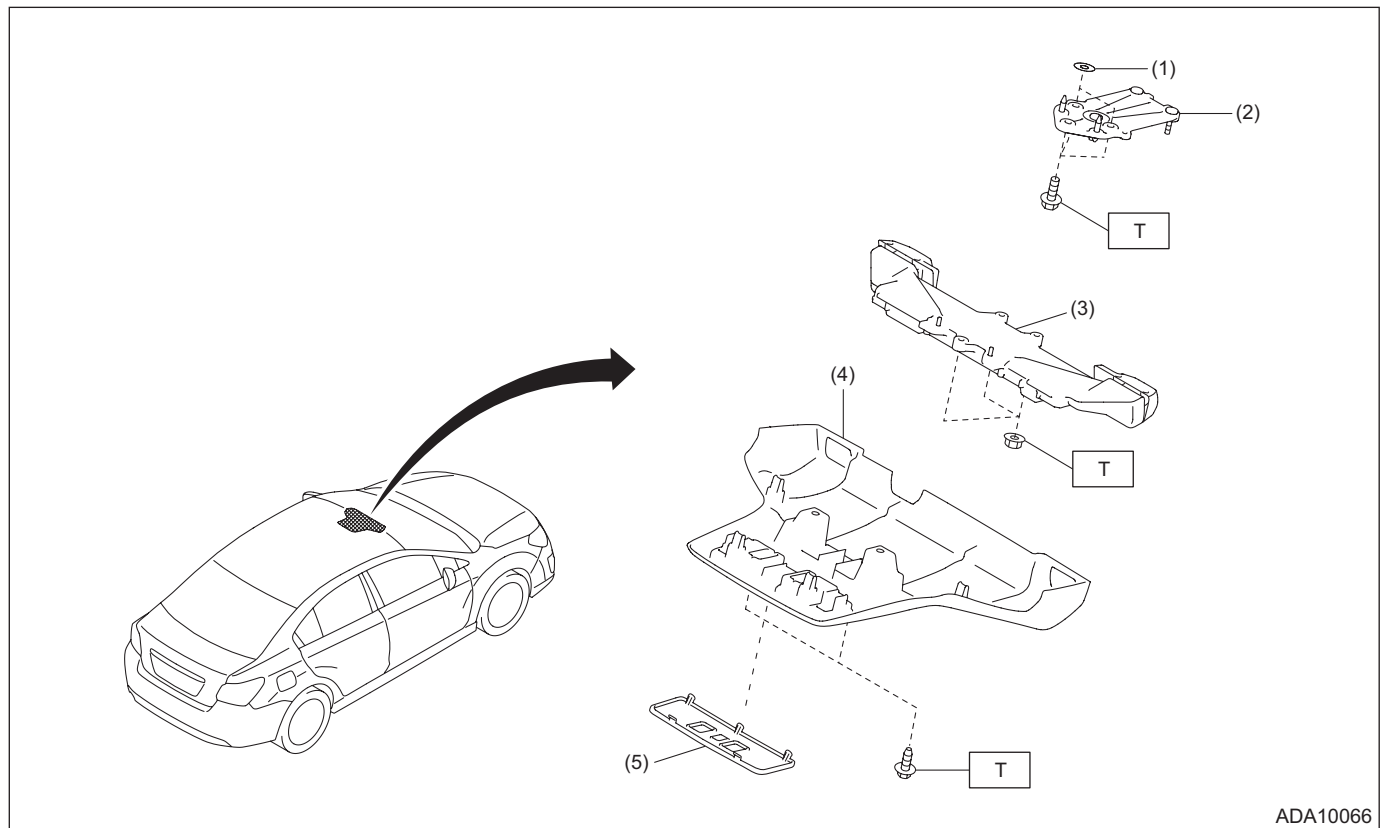


1. General Description

A: COMPONENT

1. STEREO CAMERA



ADA10066

- (1) Shim (washer)
- (2) Camera plate
- (3) Stereo camera

- (4) Stereo camera cover ASSY
- (5) Cap

Tightening torque: N·m (kgf·m, ft·lb)
T: 5.5±1.0 (0.56±0.10, 4.1±0.7)


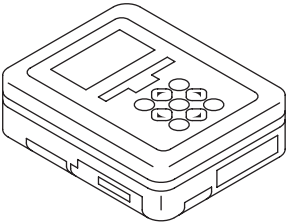
B: LOCATION

Refer to “LOCATION” of “EyeSight (DIAGNOSTICS)” section. <Ref. to ES(diag)-14, LOCATION, Electrical Component Location.>

C: CAUTION

- Before disconnecting connectors of sensors or units, be sure to disconnect the ground cable from battery. When replacing the electrical parts provided with memory functions that store contents specified by a customer, record the memory contents before disconnecting the battery ground cable.
 - Be careful of the following items. Failing to do so may cause the airbag system malfunction.
 - Yellow connectors and harnesses with yellow tapes around them are the connectors and harnesses for the airbag system. When using a tester on these circuits, follow the cautions of “AIRBAG SYSTEM”. <Ref. to AB-10, CAUTION, General Description.>
 - Be careful not to damage the airbag system wiring harness when servicing the electrical parts around the steering column.
 - When removing, installing or replacing the VDCCM&H/U, VDCCM&H/U bracket, steering wheel or steering angle sensor (steering roll connector), perform the VDC setting mode. <Ref. to VDC-26, ADJUSTMENT, VDC Control Module and Hydraulic Control Unit (VDCCM&H/U).>
 - If the damage is found in the glass repair prohibited area, always replace the glass. <Ref. to ES(diag)-7, WINDSHIELD GLASS AND DASHBOARD, INSPECTION, General Description.>
- Damage in the prohibited area can affect the recognition of the stereo camera even if it is repaired, and thereby EyeSight function may not operate properly.

D: PREPARATION TOOL**1. SPECIAL TOOL**

ILLUSTRATION	TOOL NUMBER	DESCRIPTION	REMARKS
 ST87599VA000	87599VA000 (Newly adopted tool)	RANDOM CHART	Used for adjusting stereo camera.
 ST1B022XU0	1B022XU0	SUBARU SELECT MONITOR III KIT	Used for setting of each function and trouble-shooting for electrical system. NOTE: For detailed operation procedures of SUBARU SELECT MONITOR III, refer to "PC application help for Subaru Select Monitor".

2. GENERAL TOOL

TOOL NAME	REMARKS
Circuit tester	Used for measuring resistance and voltage.
Measure (5 m (16 ft) or more)	Used for adjusting stereo camera.
Leveling line	
Plumb bob	
Packing tape	